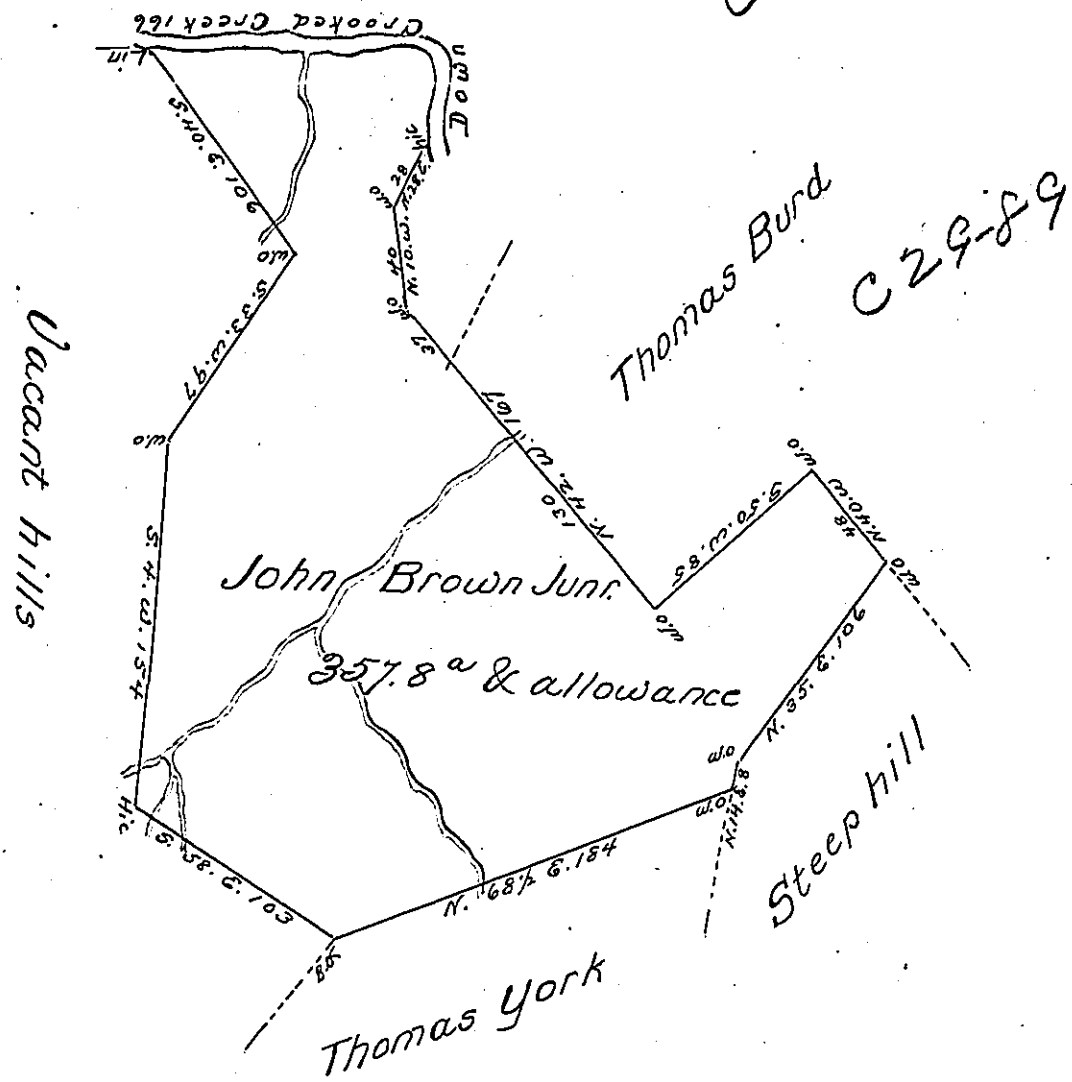


Courses & Distances
 on the Creek
 N. 4 W. 44
 S. 83 W. 68
 N. 87 W. 54



Survey'd to John Brown Junr. on the 14th. Day of
 May 1776. The above Described Tract of Three hundred fifty
 seven acres & three Quarters of an Acre & allowance of Six p^{ts}.
 Situate on the South Side of Crooked Creek including
 the long Bottom & about Ten Miles from Appleby in Arm-
 strong Township & Westmorland County By Warrant
 of the 4th. Day of March 1776

p Joshua Elder S.
 John Lukens Esq. S. Genl.

IN TESTIMONY that the above is a copy of the original remaining on file in
 the Department of Internal Affairs of Pennsylvania, made
 conformably to an Act of Assembly approved the 16th day of
 February, 1833, I have hereunto set my Hand and caused
 the Seal of said Department to be affixed at Harrisburg,
 this first day of December 1903

Gene P. Brown
 Secretary of Internal Affairs.